

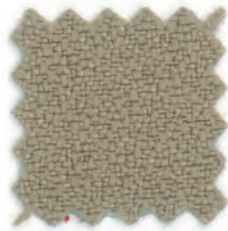
inscape



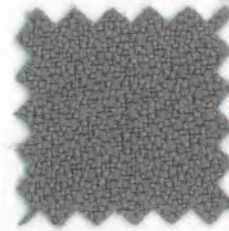
Amber (see reverse)
U1404



White (see reverse)
U1437



Angora
U1407



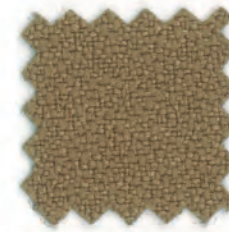
Asteroid
U1421



Fossil
U1431



Coffee Bean
U1425



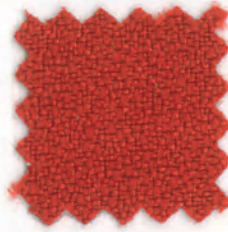
Cumin
U1414



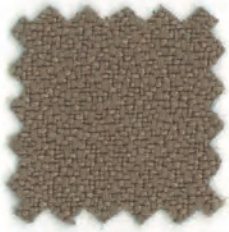
Deep Water
U1415



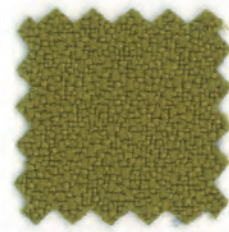
Straw
U1406



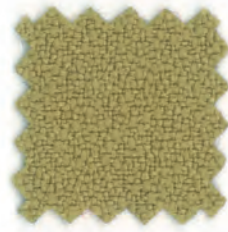
Geranium
U1426



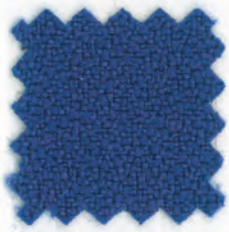
Goose
U1413



Green Apple
U1400



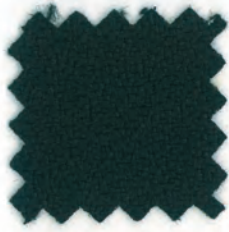
Green Olive
U1412



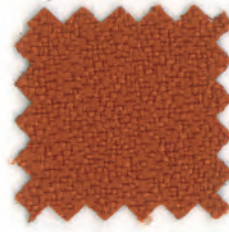
Lapis
U1432



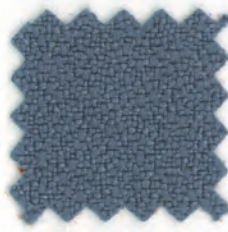
Midnight
U1417



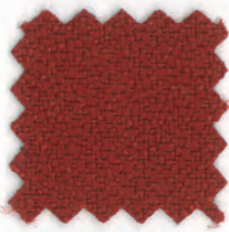
Onyx
U1402



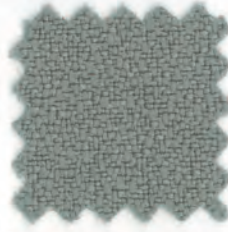
Pumpkin
U1435



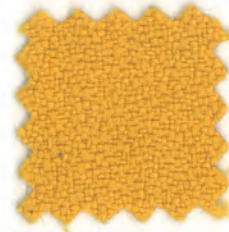
Quarry Blue
U1416



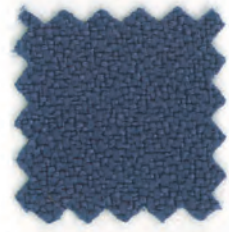
Red Delicious
U1401



Slate
U1403



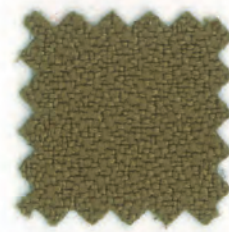
Sunshine
U1419



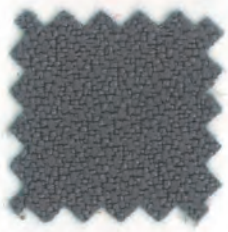
Thistle
U1427



Vanilla
U1434



Willow
U1405



Wolf
U1436

Note: fabric will be applied in a "railroad" orientation on tiles, as shown above.

Anchorage / Open House

Grade 1/A

See digital card for additional color options for Open House — inscapesolutions.com

Application Tiles, Walls (Reform⁺), Cushions, Veil
Amber and White applicable on tiles and walls only

Specifications

Contents 35% post-consumer recycled polyester
65% pre-consumer recycled polyester

Weight Anchorage: 15.0 ± 1.0 oz./lin. yd.
Open House: 13.1 ± 1.0 oz./lin. yd.

Width Anchorage: 66" min. useable
Open House: 54" min. useable

Performance

Flammability ASTM E-84 Class I or A

Colorfastness to light (AATCC 16 Option 3) Grade 4 min. at 40 hours

Colorfastness to crocking (AATCC 8) Grade 4 min. dry & Grade 3 min. wet

Abrasion to resistance (ASTM D4157) 250,000 double rubs min. cotton duck.

Vendor information

Memo samples may be ordered at www.guilfordofmaine.com.
Reference the pattern and color name in order to locate the sample ("U/UC" codes are specific to Inscape). Colors may vary between dye lots.

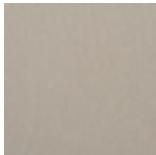


Guilford of Maine

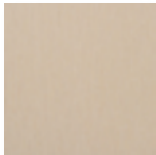
Aerial



Cumulus
U2083



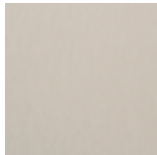
Dusk
U2084



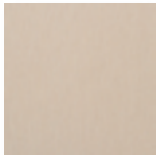
Jetstream
U2085



Mist
U2086



Sky
U2087



Stratus
U2088

Note: Images show how fabric will be applied in a "railroad" orientation. Memo samples will not show how panel fabric will be applied.



Aerial

Application

Tiles: Inscape System and Inscape Bench

Walls (Reform*)

Specifications

Contents	100% Eco Intelligent® Post-Consumer Recycled Polyester
Repeat	H. 13.7 inches V. 14.6 4nches
Weight	13.9 ounces
Width	66 in. usable

Performance

Flammability

ASTM E-84 Class 1 or A
Passed Tech. Bulletin 117 Sec. E (CS 191-53)
40 hours Class 5

Lightfastness (AATCC 16)

Crooking (AATCC-8)

Environmental

Dry and wet: Class 4 min.

Eco Intelligent® Fabric
Cradle to Cradle™ Silver Certified
Manufactured at an ISO 14001 certified facility.
Designed and manufactured for recyclability.
This fabric may contribute to LEED certification

VICTOR

Memo samples may be ordered at www.fabric.victorgroup.com.

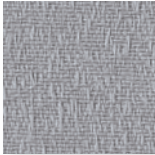
Reference the pattern and color name in order to locate the sample ("U/UC" codes are specific to Inscape). Every effort has been made to ensure color accuracy of the digital images, however, please order a sample before specification. Colors may vary between dye lots.

inscape

Pronto Solid (Dune)



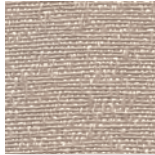
Windblown
U1201



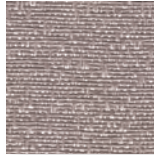
Clear Sky
U1210



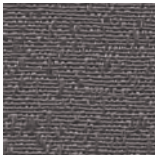
Darkness
U1220



Drift
U1200



Erosion
U1202



Raven
U1215



Breeze
U1280

Note: Images show how fabric will be applied in a "railroad" orientation. Memo samples will not show how panel fabric will be applied.

Pronto Solid

Application

Tiles: Inscape System and Inscape Bench

Walls (Reform*)

Specifications

Contents 100% Polyester
Weight 11 ± 1 oz.

Performance

Flammability

ASTM E-84 Class 1 or A
Passed Tech. Bulletin 117 Sec. E (CS 191-53)
60,000 double rubs

Abrasion
(ASTM D-4157)

Breaking Strength
(ASTM D-5034)

Lightfastness
(AATCC 16)

Crooking
(AATCC-8)

Warp: 160 lbs Fill: 110 lbs

Class 5

Dry and Wet: Class 4 min.

VICTOR

Memo samples may be ordered at www.fabric.victorgroup.com.
Reference the pattern and color name in order to locate the sample
("U/UC" codes are specific to Inscape). Every effort has been made
to ensure color accuracy of the digital images, however, please order
a sample before specification. Colors may vary between dye lots.

The logo for Inscape, featuring the word "inscape" in a lowercase, bold, sans-serif font. The letters are dark blue with a white outline, and the logo is set against a light blue, rounded rectangular background.

Twigs



Hawthorn
U1166



Buckeye
U1168



Hickory
U1171



Juniper
U1163



Linden
U1167



Poplar
U1170



Sycamore
U1161

Note: Images show how fabric will be applied in a "railroad" orientation. Memo samples will not show how panel fabric will be applied.

Twigs

Application

Tiles: Inscape System and Inscape Bench

Walls (Reform*)

Specifications

Contents	100% Eco Intelligent® Recycled Polyester
Certification	Facts Gold
Repeat	H. 14.46" V. 10.49"
Weight	11.26 ± ounces
Width	66" usable

Performance

Flammability

ASTM E-84 Class 1 or A
Passed Tech. Bulletin 117 Sec. E (CS 191-53)
Warp: 191 lbs Fill: 158 lbs

Breaking Strength (ASTM D-5034)

Lightfastness (AATCC 16)

Class 5

Crooking (AATCC-8)

Dry and Wet: Class 4 min.

VICTOR

Memo samples may be ordered at www.fabric.victorgroup.com. Reference the pattern and color name in order to locate the sample ("U/UC" codes are specific to Inscape). Every effort has been made to ensure color accuracy of the digital images, however, please order a sample before specification. Colors may vary between dye lots.

Dashing



Antique Sage
U3180



Bespoke Tan
U3181



Dapper Grey
U3182



Genteel Beige
U3183



Polish Slate
U3184



Refine Marble
U3185



Classic Silver
U3186

Note: Images show how fabric will be applied in a "railroad" orientation. Memo samples will not show how panel fabric will be applied.



Dashing

Application

Tiles: Inscape System and Inscape Bench
Walls (Reform*)

Specifications

Contents	100% Eco Intelligent® Recycled Polyester
Repeat	H. 2.4 inches V. 2 inches
Weight	10.9 ounces
Width	66 in. usable

Performance

Flammability	ASTM E-84 Class 1 or A Passed Tech. Bulletin 117 Sec. E (CS 191-53) Class 5
Lightfastness (AATCC 16)	
Crooking (AATCC-8)	Dry and wet Class 4 min.
Environmental	Eco Intelligent® Fabric Cradle to Cradle™ Silver Certified Manufactured at an ISO 14001 certified facility. Designed and manufactured for recyclability. This fabric may contribute to LEED certification

VICTOR

Memo samples may be ordered at www.fabric.victorgroup.com.
Reference the pattern and color name in order to locate the sample ("U/UC" codes are specific to Inscape). Every effort has been made to ensure color accuracy of the digital images, however, please order a sample before specification. Colors may vary between dye lots.

inscape

Off the Grid



Lava
U3110



Flora
U3111



Steam
U3112



Thermal
U3113



Solar
U3114



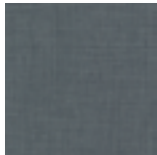
Woodchip
U3115



Fossil
U3116



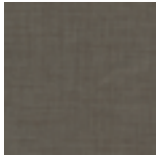
Earthglow
U3117



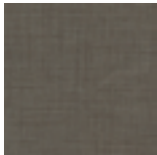
Hydro
U3118



Flame
U3119



Tidal
U3120



Coal
U3121

Note: Images show how fabric will be applied in a "railroad" orientation. Memo samples will not show how panel fabric will be applied.



Off the Grid

Application

Tiles: Inscape System and Inscape Bench

Walls (Reform*)

Specifications

Contents 100% Polyester (87% Recycled)
Weight Per Unit 9.98 oz per linear yard
Width 66"

Performance

Breaking strength ASTM D-5034 Warp: 188 lbs Fill: 169 lbs
Seam slippage ASTM D-4034 Warp: 56 lbs Fill: 46 lbs
Lightfastness AATCC 16 I5 Class 4
Crocking AATCC-8 Dry : 5 Wet: 4.5

VICTOR

Memo samples may be ordered at www.fabric.victorgroup.com.
Reference the pattern and color name in order to locate the sample ("U/UC" codes are specific to Inscape). Every effort has been made to ensure color accuracy of the digital images, however, please order a sample before specification. Colors may vary between dye lots.

inscape

Shift



Cloud
U5331



Chalk
U5340



Ash
U5330



Pumice
U5339



Bisque
U5336



Stone
U5338



Shale
U5341



Waterfall
U5333



Celadon
U5332



Straw
U5334



Clay
U5335



Umber
U5337

Note: Images show how fabric will be applied in a "railroad" orientation. Memo samples will not show how panel fabric will be applied.



Shift

Application

Tiles: Inscape System and Inscape Bench

Walls (Reform*)

Specifications

Contents	12% Polyester, 88% Polyester (Postconsumer Recycled)
Weight Per Unit	11.9 ounces/linear yard (369 g/lm)
Width	67 inches (170.2 cm)
Pattern Type	Geometric
Repeat	V .05 inches x H .72 inches (V .1 cm x H 1.8 cm)

Performance

Flammability
Lightfastness
LEED

ASTM E 84 Unadhered Class A, UL Listed
40 hours
Recycled Content

DESIGNTEX

Memo samples may be ordered at www.designtex.com.
Reference the pattern and color name in order to locate the sample
("U/UC" codes are specific to Inscape). Every effort has been made
to ensure color accuracy of the digital images, however, please order
a sample before specification. Colors may vary between dye lots.

inscape